

## PE VALVE 5030, GAS MOP10

DN20 - DN250 | Full Bore or Reduced Bore | SDR11 or SDR17/17,6

Over 25 years of experience in plastic injection, BANIDES has developed a wide range of PE ball valves, from DN20 to DN250, using PE100 material. Gastightness of BANIDES PE ball valves is ensured by self-steady elastomeric monobloc seals. The PE ball valve connection to the gas pipe can be done by the means of an electrofusion fitting. Double length of the PE spigots allows to make 2 weldings. The spigots are protected from external pollution (dust, etc.).



### Product description

PE ball valve 5030 1/4 turn, for gas service lines from -20°C to +40°C (68°F to 104°F)

### Standards

Design according to NF APE 136, EN 1555-4, GIS/V7-2, GOST-R (R)

### References

GRDF (F), EANDIS (B), NATURGY (E), etc.

### Main benefits

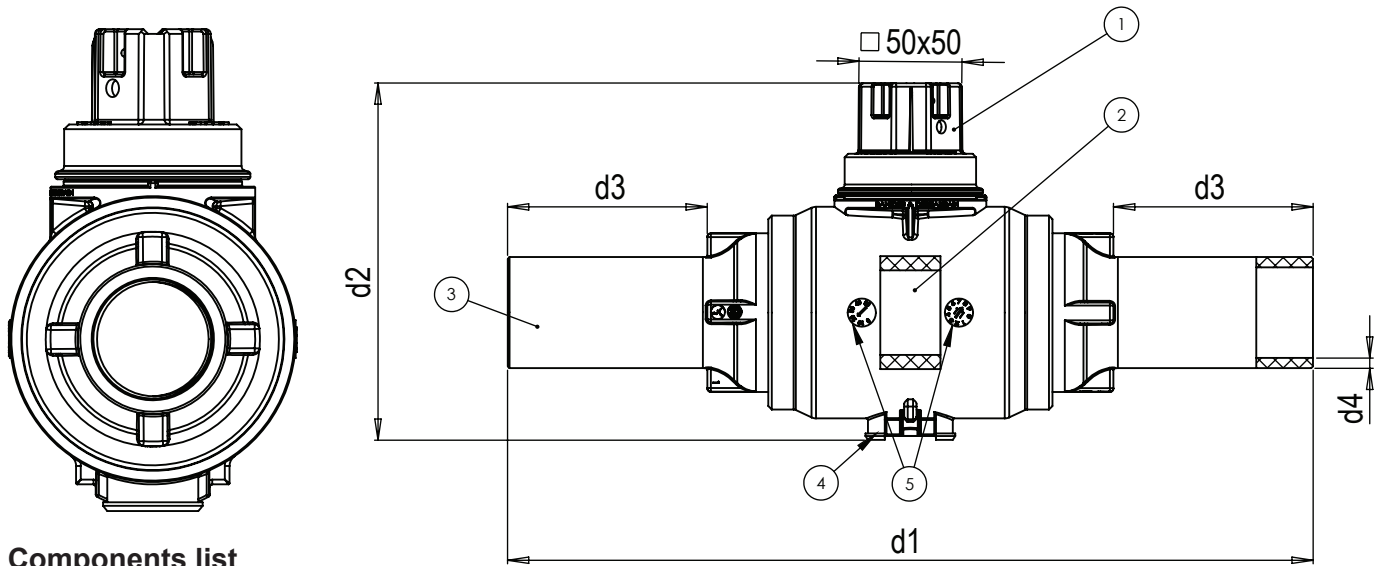
- Robust design ensuring 50 years life duration
- Ready to bury
- No maintenance required
- Bi-directional valves. Flow direction : either way
- Low operating torque
- Complete marking enabling the production tracking
- Traccoding (barcode) + QR code (on demand) ensure traceability at any time

### Options

- Closing of the valve : square head 50 or 23 mm
- Simple or telescopic sleeve
- Operating spindle
- Operating key
- Purge system available (1 or 2)
- 2 sizes of coupling collar 110mm or 90mm
- Baseplate fixed or rotating model
- Integrated index and small retention clamps ensuring better mounting of the sleeve in the coupling collar

# PE VALVE 5030, GAS MOP10

DN20 - DN250 | Full Bore or Reduced Bore | SDR11 or SDR17/17,6



### Components list

1	Operating head
2	Ball
3	Spigot
4	Baseplate fixation
5	Traceability datas

### Reference - Full Bore\*

BANIDES Reference	Valve size Ø PE	Caliber	d1	d2	d3	d4 for SDR11	d4 for SDR17/17,6	Weight (kg)
05030020	20	15	323	148	87	3,0		0,8
05030025	25	20	323	148	87	3,0		0,8
05030032	32	25	323	148	87	3,0		0,8
05030050	50	40	447	204	90	4,6		2,2
05030067	63	50	383	167	112	5,8		1,1
05030091	90	80	463	252	114	8,2	5,4	4,3
05030111	110	100	499	252	129	10,0		4,5
05030127	125	125	1145	354	90	11,4		14,7
05030162	160	150	875	434	200	14,6	9,5	24,5

\*Full bore definition according to EN 1555-4

### Reference - Standard Bore

BANIDES Reference	Valve size Ø PE	Caliber	d1	d2	d3	d4 for SDR11	d4 for SDR17/17,6	Weight (kg)
05030040	40		323	150	87	3,7		0,8
05030062	63		380	167	112	5,8		1,1
05030075	75		389	204	89	6,8		2,2
05030090	90		389	204	114	8,2	5,4	2,2
05030110	110		491	252	129	10,0	6,6	4,6
05030125	125		489	252	131	11,4	7,4	4,8
05030160	160		735	354	200	14,6	9,5	12,3
05030180	180		755	354	210	16,4	10,7	13,3
05030200	200		785	354	225	18,2	11,9	15,0
05030225	225		815	356	240	20,5	13,4	17,6
05030250	250		996	434	260	22,7	14,8	36,2

# PE VALVE 5030, GAS MOP10

DN20 - DN250 | Full Bore or Reduced Bore | SDR11 or SDR17/17,6

## Options

- Closing of the valve : square head 50 or 23 mm
- Baseplate and coupling collar ø90 or 110 mm
- PVC Operating extensions
- PVC Protection sleeve ø110 mm (fixed or telescopic model)
- PVC Operating Key
- Polypropylene Fiberglass Hood for an access to a telescopic sleeve

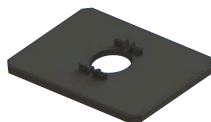
### 1 Operating head



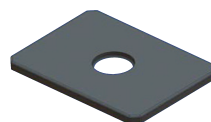
23 mm head  
12 mm high

50 mm square head  
(according to EN 1555-4)  
40 mm high

### 2 Baseplate and coupling collar



Fixed removable baseplate  
220x160x12 mm

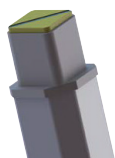


Rotating removable baseplate  
220x160x12 mm



Coupling collar ø90 / ø110 mm

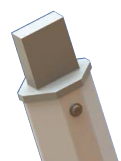
### 3 PVC Operating extensions



Square head  
Head 50x50 mm  
50 mm high  
Resistance up to 150 Nm

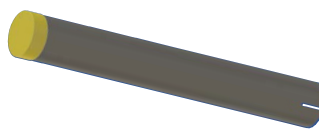


Type «A» head  
Head 15x35 mm  
50 mm high  
Resistance up to 200 Nm

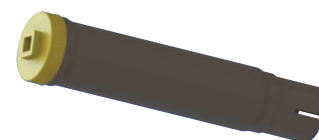


Type «B» head  
Head 20x50 mm  
50 mm high  
Resistance up to 200 Nm

### 4 PVC Protection sleeve



Fixed model  
(or with adjustable height)  
820 or 1500 mm high  
ø90 / ø110 mm



Telescopic model  
420 - 770 mm high  
or 580 - 1020 mm high  
Screw-on yellow cap with  
square head 50x50 mm and  
open / closed indication  
ø110 mm

## PE VALVE 5030, GAS MOP10

DN20 - DN250 | Full Bore or Reduced Bore | SDR11 or SDR17/17,6

### 5 PVC Operating key



Female square ending  
50x50 mm  
1 m high

### 6 Polypropylene Fiberglass Hood D400



For an access to a telescopic sleeve.

Resistant to deformation due to traffic (including pedestrian streets), parking areas for all types of the vehicules according to EN 124.

Dimensions: base 200 mm, plug 90 mm, height 190 mm.

- 1 Key allowing opening or closing of the hood.
- 2 Customizable plug equipped with metallic strapping which can be detected from the surface and which is resistant to hot-mix asphalt.